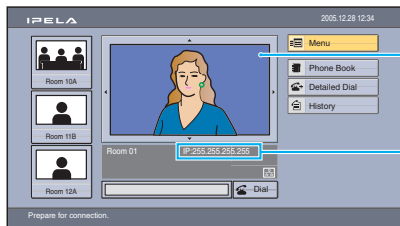


Quick Connection Guide Using Direct Dial

For details on operations, refer to the Operating Instructions (stored in the supplied CD-ROM).

To begin with

Turn on your Video Communication System and TV monitor, and check the following to ensure that connection is possible.



① Is the picture of your camera (local picture) on the monitor screen?

② Is the address of the local system* displayed?

Note: Connection to a remote party is not possible if the address of the local system* is not displayed.

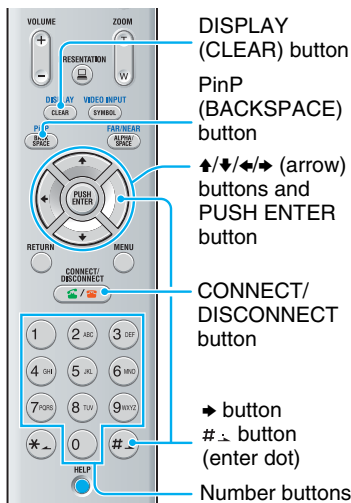
* You can hide the address of the local system using the setup menu.

Main indicators that appear during communication

	Controlling a remote camera
	Local microphone is turned off.
	Broadcasting the local picture during a multipoint connection
	Broadcasting the picture of terminal A (or B or C) during a multipoint connection
	Connection being held with standard encryption

↓ After checking...

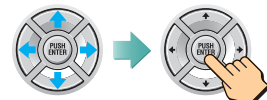
Let's connect



1 Select the number text box and press PUSH ENTER.



Number text box



Select the number text box.

Press.

2 Enter the address of the remote party.



Enter the address of the remote party.



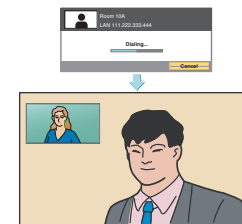
3 Select "Dial" and press PUSH ENTER.



Dial

Or press

4 The system dials and establishes communication.



Remote Commander Guide: Operations available during communication

For details on operations, refer to the Operating Instructions (stored in the supplied CD-ROM).

Switching to the RGB picture

Press PRESENTATION to switch to the RGB picture from the computer connected to the VIDEO IN RGB connector.



Switching on/off the local microphone

Adjusting the sound of the remote party

To increase the volume
 To decrease the volume

Adjusting the camera zoom

To enlarge the picture
 To reduce the picture

Selecting the input picture

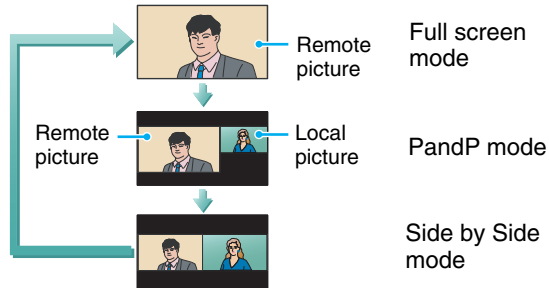
Each press of VIDEO INPUT changes the video input of the "Near" (local) or "Far" (remote) system. The selected input is displayed on the TV monitor.



- HD-SDI 1:** Video input from the main camera
- HD-SDI 2:** Video input from the second camera
- YPbPr:** Video input from the equipment connected to the VIDEO IN YPbPr connectors
- RGB:** Video input from the equipment connected to the VIDEO IN RGB connector
- S-VIDEO:** Video input from the equipment connected to the VIDEO IN S-VIDEO connector

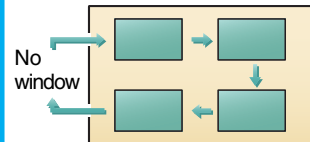
Switching the picture on the TV monitor

Each press of DISPLAY switches the picture.



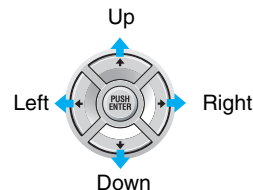
Changing the location of the window picture (in full screen mode only)

Each press of PinP changes the location of the window.



Note: The window picture cannot be displayed in PandP or Side by Side mode.

Adjusting the camera angle

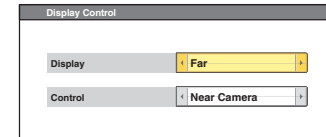


Displaying the launcher menu

Ending the communication and disconnecting



Selecting the displayed picture and the camera



Display: Select the "Near" or "Far" picture to be displayed on the monitor screen.
Control: Select the "Near Camera" or "Far Camera" to be controlled.

Presetting the camera angle

Press button 1 to 6 quickly to move the camera to the preset position. Hold down button 1 to 6 to preset the current camera position.

Note: If you press button 1 to 6 quickly when there is no preset setting, the camera moves to the center position.

