

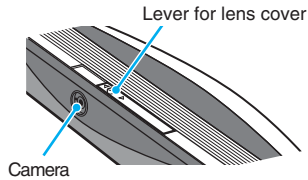
**Quick Connection Guide**

For detailed information on operations, refer to the Operating Instructions.

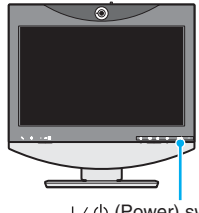
**To begin with**

**Open the lens cover, and turn on the Video Communication System.**

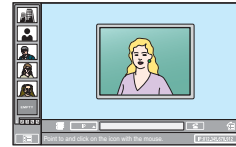
The system is equipped with a lens cover to hide the camera. Before starting a videoconference, be sure to open the lens cover by sliding the lever on top of the system to the right. If the lens cover is closed, the local picture cannot be seen on the remote site.



- Press the I / ⏻ (Power) switch on the system.



- The switch's indicator lights orange, and the system turns on. When startup is complete, the indicator lights green.
- The launcher menu appears on the display along with the picture from the local camera.



**Main indicators that appear during communication**

	Sending still images.
	Receiving still images.
	DSM data being sent or received.
	Shows the line status.
	Shows the microphone input level. When the microphone is turned off, the indicator display changes to

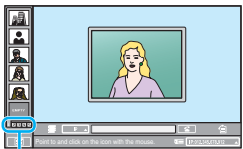
**After preparation**

**Let's connect**

**Call a remote party using One Touch Dial.**

- 1 Click the tab for the group in which the party that you want to call is registered.**

The One Touch Dial group is switched.



Group tabs for One Touch Dial

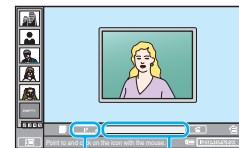
- 2 Move the mouse cursor to the party that you want to call, and click "Dial."**



The selected party is called.

**Call a remote party by entering an IP address in the launcher menu.**

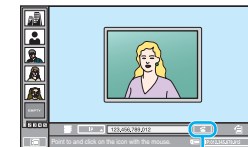
- 1 Select "IP" for the line interface.**



Number entry text box

- 2 Click the number entry text box, enter the remote party's IP address using the soft keyboard that appears, and click the OK button.**

- 3 Click the (Dial) button.**



Dial button

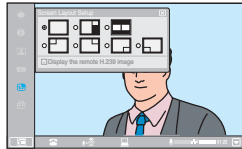
The entered party is called.

# Quick Operation Guide

For detailed information on operations, refer to the Operating Instructions.

## Screen Layout Settings

The display changes when you select the layout of your choice.



### Full screen



Only the remote video is shown in full-screen display.

### Picture-and-picture



The remote video is shown in full-screen on the left with the local video in a window picture on the right.

### Side-by-side

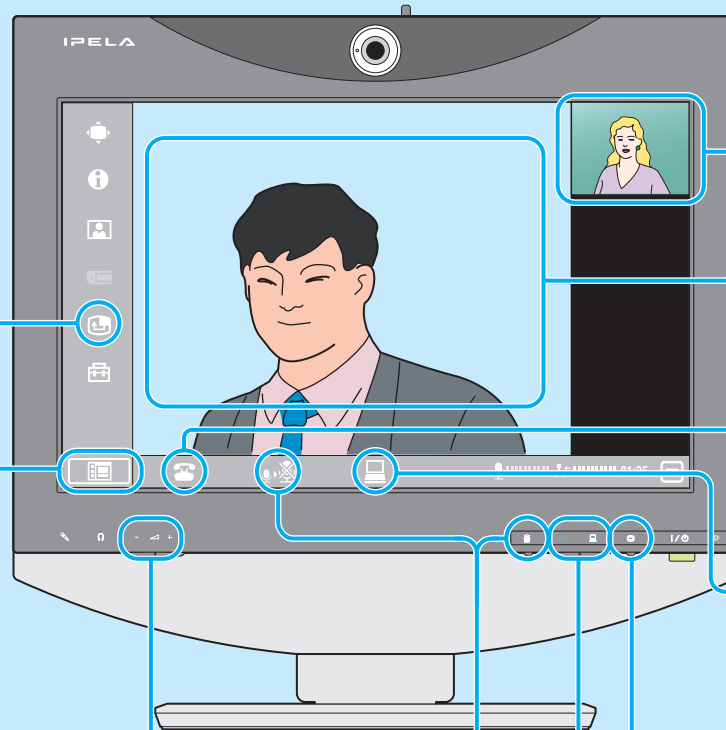


The remote video is shown on the left in the same size as the local video on the right.

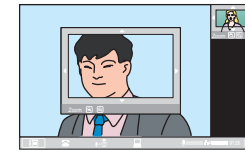
### Picture-in-picture



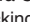
The remote video is shown in full-screen display with the local video in a window picture. You can position the window picture in any of the four corners.



## Camera Adjustment (Local/Remote)



When you **right-click** the local or remote picture, zoom and angle adjustment buttons appear to allow camera adjustment. Right-click the local or remote picture again to hide the adjustment buttons.

You can also perform adjustments from the Camera Control menu, which you can display by clicking  in the menu bar.

## Ending Communication (Disconnect)

Click this button to end a communication.

## Data Transmission

This button appears only when a PCSA-DSM1 Data Solution Module is installed. Click it to send or cancel data transmissions.

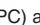

## DTMF Transmission

Press and hold the  (Menu) button for **3 seconds** to display the DTMF soft keyboard.




Click the number buttons that you want to send (0 to 9, #, \*) to transmit tone signals to the remote party.

## Switching the Display

Press the  (PC) and  (Videoconference) buttons to switch between videoconference display and computer screen display.


## Volume Adjustment

Adjust the volume using the  (Volume) buttons.  
+ : Increases the volume.  
- : Decreases the volume.

## Mic Off

Press this to suppress the sound from the local system. Press again to resume sending sound to the remote party.

## Displaying/Hiding the Menu Bar

You can switch between displaying and hiding the menu bar by clicking the  (Menu bar display) button.